



24 CHATHAM PLACE, BRIGHTON, BN13TN (UK)
TEL. (UK) 08453108066 International Tel. +441273746505
EMAIL: info@nhrorganiccoils.com Web Site: www.nhrorganiccoils.com

Certificate of Analysis & Gas Chromatography
Organic Eucalyptus Essential Oil
(Eucalyptus globulus)

Batch Number: 240718-3

Caractéristiques d'analyse :

GC – 7820 A GC SYSTEM – AGILENT TECHNOLOGIES

Colonne : SUPELCOWAX TM-10 60-0.25-0.25

Programmation de température : 10mn à 90°C –20°C/mn → 220°C –10mn à 220°C

Gaz vecteur N2 : 28 psis

Caractéristiques physiques :

ESSAI	RÉSULTAT	MÉTHODE
Apparence	Liquide	Conforme std.
Color	Jaunâtre	Conforme std.
Odeur	Caractéristique	Conforme std.
Densité relative (20°C):	0.915	NSOC 57
Indice de refraction (20°C)	1.464	NSOC 68
Angle de rotation optique (20°C)	+5.05°	NSOC 67
Solubilité dans l'alcool 70°(20°C)	5.0 v/v	NP 96
Indice de Peroxides (mmol/kg)	3.10	NSOC 5
Teneur en 1,8-cineol	66.294 %	CG - 0074
Teneur en α-pinene	17.413 %	CG - 0074
Teneur en canfene	0.158 %	CG - 0074
Teneur en β-pinene	0.401 %	CG - 0074
Teneur en α-phellandrene	0.213 %	CG - 0074
Teneur en limonene	2.880 %	CG - 0074
Teneur en γ-terpineno	0.276 %	CG - 0074
Teneur en p-cimeno	1.408 %	CG - 0074
Teneur en camphor	<0.1%	CG - 0074

sample Name:

Peak #	RetTime [min]	Type	Width [min]	Area [pA*s]	Height [pAJ]	Area %
9	7.428	VV	0.0669	362.34140	79.38528	2.00022
10	7.697	VV	0.0557	339.99121	2039.27759	66.29379
11	8.290	VV	0.0649	10.92729	2.03983	0.08686
12	8.435	VV	0.0957	34.67857	5.02286	0.27566
13	8.644	VV	0.1158	44.51131	5.24496	0.35382
14	9.200	VV	0.0981	177.14186	25.18410	1.40808
15	9.540	VV	0.1039	17.53151	2.37020	0.13936
16	9.708	VB	0.1332	17.27254	1.77949	0.13730
17	10.922	BB	0.0640	6.55613	1.59207	0.05211
18	13.468	VB	0.0633	6.24555	1.44235	0.04965
19	15.071	VB	0.0932	11.76378	1.72403	0.09351
20	16.960	VV	0.0760	162.18056	30.31036	1.28916
21	17.331	VV	0.0738	15.62993	3.20112	0.12424
22	17.456	VV	0.0734	15.91669	3.23542	0.12652
23	17.557	VV	0.1141	22.14531	2.69970	0.11603
24	17.797	VV	0.1267	249.44971	27.68133	1.98285
25	18.752	VV	0.0658	23.12604	5.41702	0.18383
26	18.855	VB	0.0772	314.44019	59.16744	2.49945
27	20.121	VV	0.2738	177.75903	8.35450	1.41299
28	21.033	VV	0.2745	35.17535	1.53046	0.27961
29	23.200	BV	0.1278	10.25343	1.11754	0.08150
30	23.399	VB	0.2770	45.28219	1.96942	0.35994
31	42.200	BB	0.6157	155.39084	2.96002	1.23519

Totals: 1.25804e4 3766.95500

** end of Report***

```
=====
Acq. Operator
Acq. Instrument GC 7820 Location Vial 1
Injection Date 4/27/2017 10:47:53 AM Inj Volt1111e Manually

Method C:\CHEM32\1\METHODS\EUCALIPTO.M
Last changed 11/6/2015 8:00:29 PM
Method Info METHOD: EUCALIPTO
```

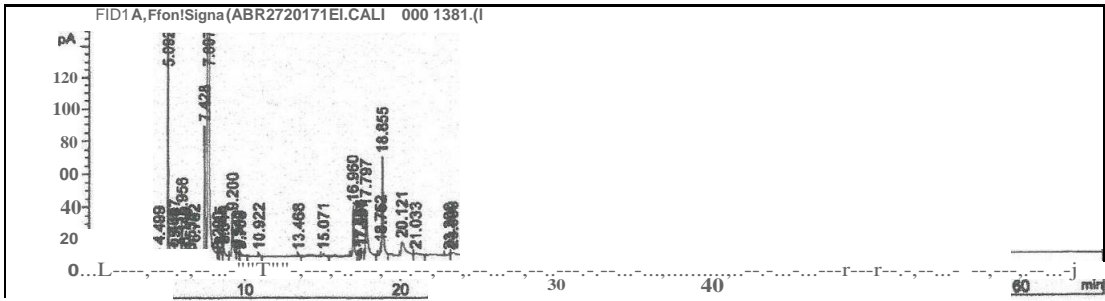
OVEN: 90°C - 10 MIN - 20°C/MIN - 150°C
 0,1 mcl 1\MOSTRA INJECTADA PURA

SLOPE SENSITIVITY: 1

SPLIT RATIO 80:1 - 60 ML/MIN (N2)

COLUMN: SU-PE-LCO ttittll - FOLAR -

Sample Info RP EUCALYPTUS GLOBULUS CRUDE BIO



Area Percent Report

Sorted By Signal
 Multiplier: 1.0000
 Multiplier: 1.0000
 Multiplier & Dilution Factor with ISTDs

Signal 1: FID1 A, Front Signal

Peak	RetTime [min]	Type	Width [min]	Area [pA*s]	Height [pA]	Area %
1	4.499	VV	0.0255	9.55683	5.39827	0.07597
2	5.092	VV	0.0239	2190.66211	1400.38245	17.41336
3	5.405	VV	0.0336	8,94847	3.83813	0.07113
4	5.497	W	0.0322	19.89608	9.29610	0.15815
5	5.956	BV	0.0339	50.42179	22.72023	0.40000
6	6.146	VB	0.0354	10.77045	4.58442	0.08561
7	6.538	BV	0.0703	7.60755	1.44381	0.06047
8	6.762	vv	0.0578	26.77704	6.58451	0.21285