



24 CHATHAM PLACE, BRIGHTON, BN1 3TN (UK)
TEL. (UK) 0845 310 8066 International Tel. +44 1273 746505
EMAIL: info@nhrorganiccoils.com Web Site: www.nhrorganiccoils.com

Certificate of Analysis & Gas Chromatography **Organic Eucalyptus Essential Oil (Eucalyptus globulus)**

Batch number: 250118-8

Caractéristiques d'analyse :

GC – 7820 A GC SYSTEM – AGILENT TECHNOLOGIES
Colonne : SUPELCOWAX TM-10 60-0.25-0.25
Programmation de température : 10mn à 90°C –20°C/mn→220°C–10mn à220°C
Gaz vecteur N2 : 28 psis

Caractéristiques physiques :

ESSAI	RÉSULTAT	MÉTHODE
Apparence	Liquide	Conforme std.
Color	Jaunatre	Conforme std.
Odeur	Caractéristique	Conforme std.
Densité relative (20°C):	0.915	NSOC 57
Indice de refraction (20°C)	1.464	NSOC 68
Angle de rotation optique (20°C)	+5.05°	NSOC 67
Solubilité dans l'alcool 70°(20°C)	5.0 v/v	NP 96
Indice de Peroxides (mmol/kg)	3.10	NSOC 5
Teneur en 1,8-cineol	66.294 %	CG - 0074
Teneur en α -pinene	17.413 %	CG - 0074
Teneur en canfene	0.158 %	CG - 0074
Teneur en β -pinene	0.401 %	CG - 0074
Teneur en α -phellandrene	0.213 %	CG - 0074
Teneur en limonene	2.880 %	CG - 0074
Teneur en γ -terpineno	0.276 %	CG - 0074
Teneur en p-cimeno	1.408 %	CG - 0074
Teneur en camphor	<0.1%	CG - 0074

Data File C:\CHEM32\1\DATA\ABR272017\EUCALIPTO001381.D
 Sample Name:

Peak #	RetTime [min]	Type	Width [min]	Area [pA*s]	Height [pA]	Area %	
9	7.428	VV	0.0669	362.34140	79.38528	2.88022	-limonene
10	7.697	VV	0.0557	8339.99121	2039.27759	66.29379	-1,8 cineol
11	8.290	VV	0.0649	10.92729	2.03983	0.08686	
12	8.435	VV	0.0957	34.67857	5.02286	0.27566	-γ-terpinene
13	8.644	VV	0.1158	44.51131	5.24496	0.35382	
14	9.200	VV	0.0981	177.14186	25.18410	1.40808	-p-cymene
15	9.540	VV	0.1039	17.53151	2.37020	0.13936	
16	9.708	VB	0.1332	17.27254	1.77949	0.13730	
17	10.922	BB	0.0640	6.55613	1.59207	0.05211	
18	13.468	VB	0.0633	6.24555	1.44235	0.04965	
19	15.071	VB	0.0932	11.76378	1.72403	0.09351	
20	16.960	VV	0.0760	162.18056	30.31036	1.28916	-linalol
21	17.331	VV	0.0738	15.62993	3.20112	0.12424	
22	17.456	VV	0.0734	15.91669	3.23542	0.12652	
23	17.557	VV	0.1141	22.14531	2.69970	0.17603	-terpinen-4-ol
24	17.797	VV	0.1267	249.44971	27.68133	1.98285	-aromadendrene
25	18.752	VV	0.0658	23.12604	5.41702	0.18383	
26	18.855	VB	0.0772	314.44019	59.16744	2.49945	-t-pinocareol
27	20.121	VV	0.2738	177.75903	8.35450	1.41299	-α-terpineol
28	21.033	VV	0.2745	35.17535	1.53046	0.27961	
29	23.200	BV	0.1278	10.25343	1.11754	0.08150	
30	23.399	VB	0.2770	45.28219	1.96942	0.35994	
31	42.200	BB	0.6157	155.39084	2.96002	1.23519	-globulol

Totals : 1.25804e4 3766.95500

=====
 *** End of Report ***

Data File C:\CHEM32\1\DATA\ABR272017\EUCALIPTO001381.D
Sample Name:

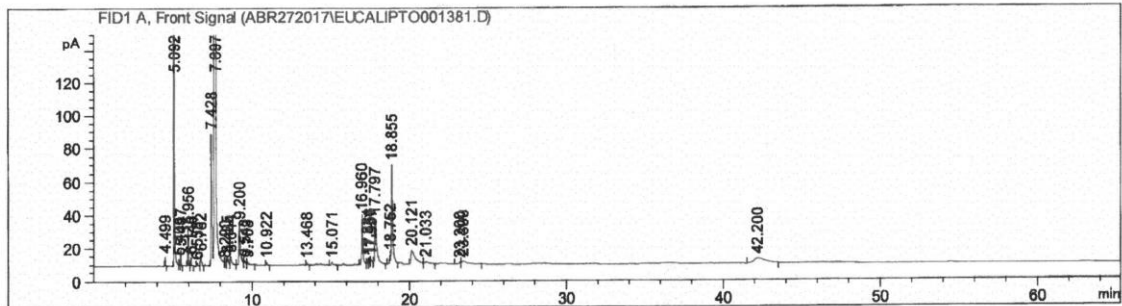
=====
Acq. Operator :
Acq. Instrument : GC 7820 Location : Vial 1
Injection Date : 4/27/2017 10:47:53 AM Inj Volume : Manually
Method : C:\CHEM32\1\METHODS\EUCALIPTO.M
Last changed : 11/6/2015 8:00:29 PM
Method Info : METHOD: EUCALIPTO

OVEN: 90°C - 10 MIN - 20°C/MIN - 150°C
0,1 mc1 AMOSTRA INJECTADA PURA

SLOPE SENSITIVITY: 1

SPLIT RATIO 80:1 = 60 ML/MIN (N2)

COLUMN: SUPELCO 24081 - POLAR



=====
Area Percent Report
=====

Sorted By : Signal
Multiplier: : 1.0000
Dilution: : 1.0000
Use Multiplier & Dilution Factor with ISTDs

Signal 1: FID1 A, Front Signal

Peak #	RetTime [min]	Type	Width [min]	Area [pA*s]	Height [pA]	Area %
1	4.499	VV	0.0255	9.55683	5.39827	0.07597
2	5.092	VV	0.0239	2190.66211	1400.38245	17.41336 - α -pinene
3	5.405	VV	0.0336	8.94847	3.83813	0.07113
4	5.497	VV	0.0322	19.89608	9.29610	0.15815 - camphene
5	5.956	BV	0.0339	50.42179	22.72023	0.40080 - β -pinene
6	6.146	VB	0.0354	10.77045	4.58442	0.08561 - sabinene
7	6.538	BV	0.0703	7.60755	1.44381	0.06047
8	6.762	VV	0.0578	26.77704	6.58451	0.21285 - α -phellandrene